



BAC - LINE BORING MACHINES

AZ spa MACHINE TOOLS

model
BAC1500
BAC2000
BAC2500





Device for the 360° rotation of the spindle head

THE BAC SERIES

The BAC series of line boring machines delivers superior accuracy and reliability for successful line boring of main and camshaft bearings.

The base are exceptionally heavy to eliminate any possibility of deflection, and the drive shaft is particularly sturdy and has an exceptional working force.

The low voltage electrical system is designed as per the latest safety standards.

The lubrication system is very simple and rational.

The manual working feed has a quick or micrometric control and the automatic working feed has variable speed in both directions.

The boring bar holder supports are adjustable vertically and horizontally.

Workholding fixtures deliver superior performance and are designed to minimize the chances of errors in set-up. All controls are easy to understand and to use. They are placed in a convenient position, allowing the operator easy access when standing near the workpiece.

1. Comandi elettrici in 24 volt
2. Variatore di velocità mandrino
3. Variatore di velocità avanzamenti di lavoro
4. Comandi di inversione avanzamenti
5. Comando inversione rotazione mandrino
6. Segnale di surriscaldamento motori
7. Visualizzatori di velocità di lavoro



EQUIPMENT

Low voltage electric control 24V

Pair of arch supports with no. 2 dial gauges

Bridge support for boring bar

Toe clamp assembly (4 pieces)

Bridge support for alignment with dial gauge

Tool setting device with instrument (AZ706)

Engine block clamping device with bar

Pair of parallel supports H. 230x600 mm.

Pair of parallel supports H. 100x600 mm.

Pair of parallel supports H. 145x400 mm.

Operating manual

Service Tools

RECOMMENDED

AZ552 Equipment for boring from 28 to 55 mm with

AZ554 Equipment for boring from 40 to 100 mm. diameter

AZ556 Equipment for boring from 90 to 200 mm

AZ711 Inner gauge for bushing from 35 to 105 mm diameter with dial gauge

OPTIONAL

AZ551 Equipment for boring from 22 to 55 mm. dia.

AZ553 Equipment for boring from 32 to 60 mm. dia.

AZ555 Equipment for boring from 50 to 150 mm diameter

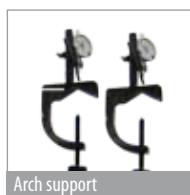
AZ557 Equipment for boring from 100 to 200 mm. dia.

AZ714 Inner gauge from 100 to 220 mm with dial gauge

AZ717 Facing device to be applied to bar 45mm

AZ833 Grinder for tools complete with sharpening support

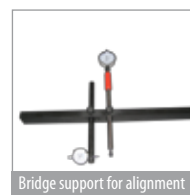
AZ862 Distance control device



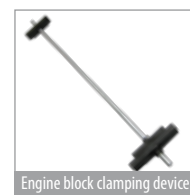
Arch support



Bridge support for boring bar



Bridge support for alignment



Engine block clamping device



AZ706



Parallel support 230x600



Parallel support 100x600



Parallel support 145x400



AZ711



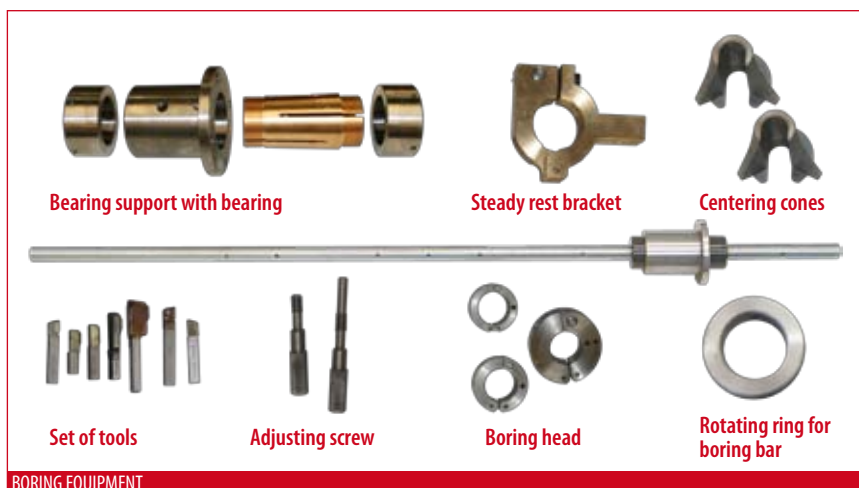
AZ714



AZ717



AZ833



Bearing support with bearing

Steady rest bracket

Centering cones

Set of tools

Adjusting screw

Boring head

Rotating ring for boring bar

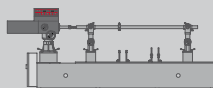


EQUIPMENT FOR BORING

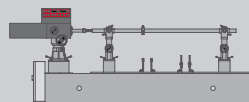
Part number		AZ555	AZ556	AZ557	AZ551	AZ552	AZ553	AZ554
Boring Range	mm	from 50 to 150	from 90 to 200	from 100 to 200	from 23 to 50 mm	from 28 to 50	from 32 to 60	from 40 to 100
Boring bar	mm	dia. 45 lgth. 2100	dia. 50 lgth. 2800	dia. 60 lgth. 3000	dia. 22 lgth.1300	dia. 25 lgth. 1300	dia. 30 lgth. 1600	dia. 38 lgth. 1950
Bearing support	mm	2	2	2	2	2	2	2
Bearings	mm	2	2	2	2	2	2	2
Centering cones	mm	2	2	2	2	2	2	2
Steady rest bracket	mm	1	1	1	1	1	1	1
Boring tools	mm	dia. 8 lgth. 12 dia. 8 lgth. 15 dia. 8 lgth. 22 dia. 8 lgth. 27 dia. 8 lgth. 30 DX dia. 8 lgth. 43 SX dia. 8 lgth. 43 DX dia. 8 lgth. 53 SX dia. 8 lgth. 53	dia. 8 lgth. 12 dia. 8 lgth. 15 dia. 8 lgth. 22 dia. 8 lgth. 27 dia. 8 lgth. 30 DX dia. 8 lgth. 43 SX dia. 8 lgth. 43 DX dia. 8 lgth. 53 SX dia. 8 lgth. 53 DX dia. 10 lgth. 45 DX dia. 10 lgth. 60 bronze DX dia. 10 lgth. 58 bronze SX dia. 10 lgth. 40 bronze SX dia. 10 lgth. 45 DX dia. 10 lgth. 27 DX dia. 10 lgth. 30	dia. 8 lgth. 12 dia. 8 lgth. 15 dia. 8 lgth. 22 dia. 8 lgth. 27 dia. 8 lgth.30 DX dia. 8 lgth.43 SX dia. 8 lgth.43 DX dia. 8 lgth. 53 SX dia. 8 lgth. 53 DX dia.10 lgth.45 DX dia. 10 lgth. 60 bronze DX dia. 10 lgth. 58 bronze SX dia. 10 lgth. 40 bronze SX dia. 10 lgth. 45 DX dia. 10 lgth. 27 DX dia. 10 lgth. 30	DX dia. 7 lgth. 2; SX dia. 7 lgth. 2; DX dia. 7 lgth. 3; SX dia. 7 lgth. 3;	DX dia. 7 lgth. 2; SX dia. 7 lgth. 2; DX dia. 7 lgth. 3; SX dia. 7 lgth. 3;	DX dia. 7 lgth. 22 SX dia. 7 lgth. 22 DX dia. 7 lgth. 33 SX dia. 7 lgth. 33 dia. 8 lgth. 12	DX dia. 7 lgth. 22 SX dia. 7 lgth. 22 DX dia. 7 lgth. 33 SX dia. 7 lgth. 33 dia. 8 lgth. 12
Chamfering tools	mm	dia. 8 lgth. 63			dia. 7 lgth. 48	dia. 7 lgth. 48	dia. 7 lgth. 48	dia. 7 lgth. 48
Boring heads	mm	dia. 65 dia. 75 dia. 100 dia. 120	dia. 90 dia. 120 dia. 150	dia. 100 dia. 130 dia. 160	-	-	dia. 50	dia. 65

BAC // Line Boring machine

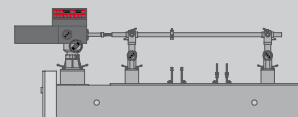
BAC1500



BAC2000



BAC2500



WORKING CAPACITY

Max length of block	1500 mm	2000 mm	2500 mm
Min e max boring diameter	23-200 mm	23-200 mm	23-200 mm
Maximum spindle travel	400+120 mm	400+120 mm	400+120 mm

GEOMETRIC FEATURES

Min distance from bed to centerline	450 mm	450 mm	650 mm
Max distance from bed to centerline	650 mm	650 mm	850 mm

SPEEDS AND FEEDS

Variable spindle speed	100-600 mm/min	100-600 mm/min	100-600 mm/min
Continuous automatic feed	0-80 mm/min	0-80 mm/min	0-80 mm/min

MOTOR RATINGS

Spindle motor power	1.5 KW	1.5 KW	1.5 KW
Feed motor power	75 W	75 W	75 W

DIMENSIONS

Length x width x height	3320x650x1680 mm	3820x650x1680 mm	4320x650x1880 mm
Weights without packing	1300 kg	1400 kg	1550 kg

AZ spa MACHINE TOOLS



AZ spa
 Viale dell'Electronica, 20 36016 THIENE (VI) ITALY
 T +39 (0) 445575543 F +39 (0) 445575756
 E info@azspa.it website www.azspa.it



AZ spa | Viale dell'Electronica, 20 36016 THIENE (VI) ITALY | tel. +39 0445 575543 | fax +39 0445 575756 | email: info@azspa.it

WWW.AZSPA.IT



Subject to change, as of OCTOBER 2011